

<Preparation> * LED resin is not included.
LED resin, LED&UV Lamp, Tweezers,
Toothpick, Scissors, Flat-nose pliers,
Masking tape, Cotton swab,

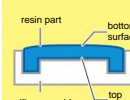
<Not necessary but convenient>
Silicone mat, Cardboard, Embossing heat
tool, Parts for tray, Wet wipes, File

Contents

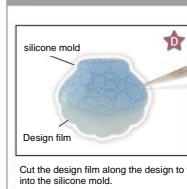


For materials in this kit, their colors, shapes, sizes and pattern may vary, due to manufacturing process. Actual object may have certain level of difference compare with the image printed here, either in shape, size or pattern. Image printed on instruction may have a certain level of color difference than actual object. It is possible that the prints on the films may be affected when they were folded, or scratched by nails, scissors or other hard objects. There may be lines on the edges of the film. Cut them out before use. The design of a film may be a little off-centered or smeared, due to manufacturing process. For the metal parts, it is possible to have certain amount of flaws on the surface, due to plate coating process.

TIP
Pour the resin to the silicone mold until it is full.
※ If the amount of the resin is not full, the bottom surface may sink after harden.



Preparation



Read the following before you start
Caution!
Keep out of reach of children and pets. Maybe harmful if swallowed.

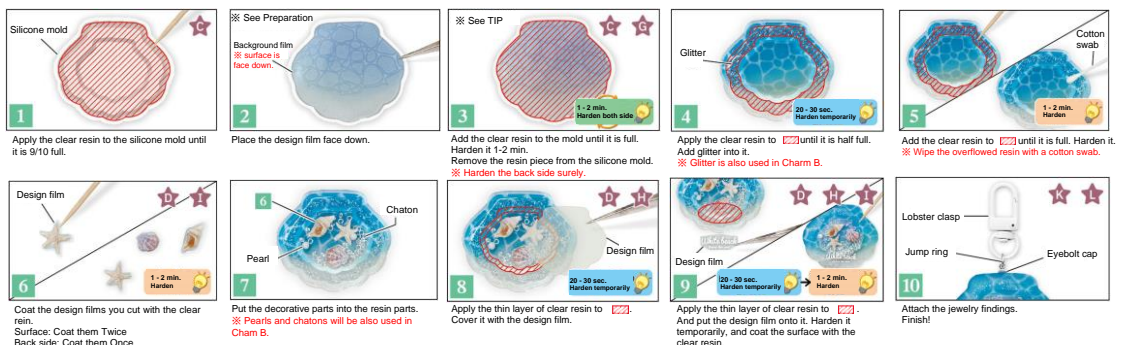
Please check if the contents are all included.
you will need:
tweezers - for detailed work.
toothpicks - to remove air bubbles, place decorative parts, and apply the resin to parts.
an apron - to protective your clothes.

How to make

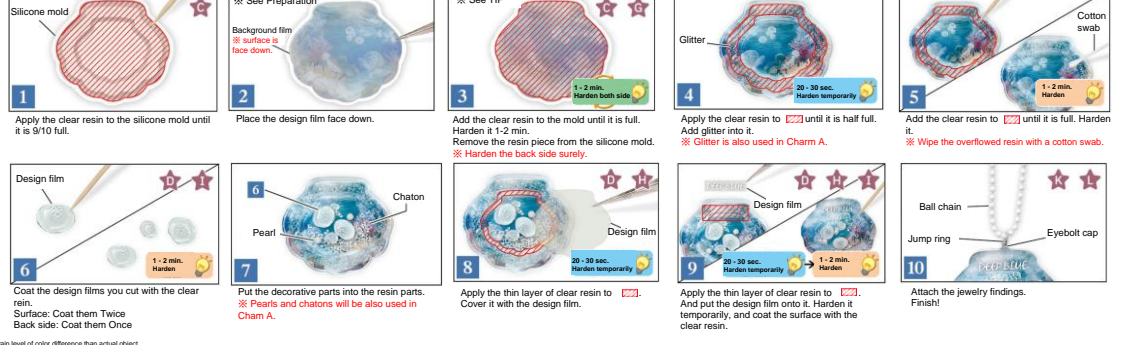
Read "Basics" before you start.

Enjoy creating your original charm, referring to the following image.

Charm A



Charm B



Basics

Q & A what is resin?
Resin is thermoplastic material that is hardened with the specific lamp. Resin is versatile and it can be used for coating parts and adhering parts.

Required time for hardening
Temporarily: Approx. 20-30 sec.
Fully: Approx. 1-2 min

The time required depends on the season, humidity and the size of your artwork.

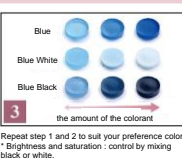
* Image printed on instruction may have a certain level of color difference than actual object.

During work



How to create the colored resin

* Silicone cup is useful item for creating the colored resin.

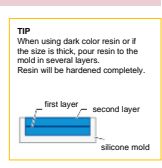
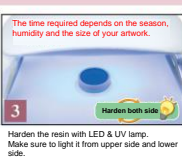


TIP
Resin may harden with sunlight, UV ray and fluorescent light.
* Create the colored resin before using.
* Work away from direct sunlight and UV ray. When you don't use lamp, please turn it off.
Careful not to put too much powder!
* Be careful not to put too much powder into the resin. Resin may not harden. Also, the surface may not be flat after hardening. In this case, cover the surface with the clear resin.

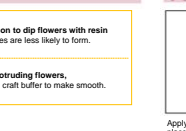
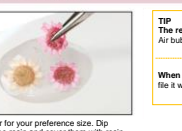
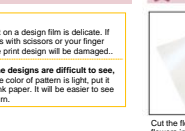
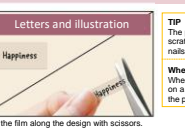
How to create the pattern



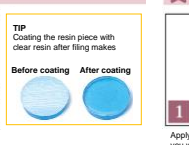
How to use a silicone mold



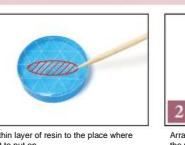
How to cut a design film



How to remove burrs



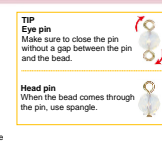
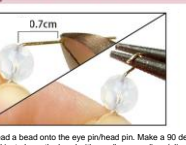
How to attach decorative parts



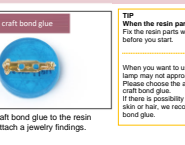
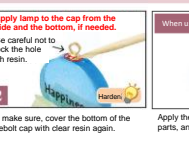
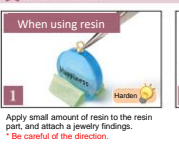
How to coat parts



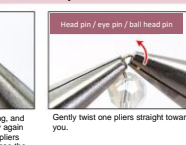
How to twist a pin



How to attach jewelry findings



How to use a jump ring or the loop of the ball head pin



Attention

● Resin
Read instruction of prepared resin before start. (Prepare the tool as necessary)
Work away from direct sunlight and UV ray. Ventilate the room. When you don't use lamp, please turn it off.

● Silicone mold
Remove the dust and dirt from silicone mold before use. Do not use with food. Do not eat or swallow. A silicone mold is perishable goods. It will degrade after many years and uses. When using under the degraded condition, it may be difficult to remove your artwork from the mold. When using with colored material, the color may stain on the mold. Wipe it off before reuse. The mold and your artwork may be damaged. Do not put a silicone mold on a printed paper. When producing a three-dimensional shape silicone mold, material to have heat-resistant, elasticity, and strength, and prevent from deterioration is put in the mold. Because of that, the color of the mold may be yellowish, and also the color will be much yellower with time. This is unavoidable phenomenon to maintain the characteristics, but it does not have an effect on creating resin artwork. (Storage)
Do not store in direct sunlight and avoid dirt. Keep out of reach of children and pets. Keep away from heat. The shape may change. Do not put one over another when storage. Depending on the storage condition, durability may change. Dispose of them according to your local regulations.

● Metal parts
As the color of plate coating may be affected if they were touched with sweat or stored in dirt, please wipe away the sweat or dirt with a soft cloth before you store them. We also recommend you to store the metal parts in a bag with zipper. Please never wipe the metal parts with jewelry polishing cloth containing abrasive material, that will affect the color of the plate coating.

● Caution when wearing the jewelry
Jewelry iron parts may cause irritation to sensitive skin. If you have skin irritation, remove your jewelry and consult your doctor. To prevent incident, do not wear jewelry while sleeping, playing sports, working, or taking care children. Jewelry iron parts may cause burns in extreme temperature conditions.