

KOSK-200 Animal tail Shaker Charm  
Dog

Japanese Utility Registration  
Number: 3219486

【Preparation】

- LED Resin
- LED Lamp
- Tweezers
- Toothpicks
- Scissors
- Needle-Nose pliers

【Not necessary but convenient】

- Silicone mat
- Cardboard
- Craft buffer
- Embossing heat tool
- Tray for parts

Contents



Silicone mold



Design film



Decorative parts A



Decorative parts B



Coloring powder



Eyebolt cap  
Key chain

Image printed on instruction may have a certain level of color difference than actual object. Actual object may have certain level of difference compare with the image printed here, either in shape, size or pattern. For materials in this kit, their colors, shapes, sizes and pattern may vary, due to manufacturing process. For the metal parts, it is possible to have certain amount of flaws on the surface, due to plate coating process.

For guardians

Caution!

Keep out of reach of children and pets. Maybe harmful if swallowed.  
When infants creates this charm, they must be accompanied by an adult.  
Please check if the contents are all included.

You will need:

- tweezers - for detailed work.
- toothpicks - to remove air bubbles, place decorative parts, and apply the resin to parts.
- an apron - to protective your clothes.

Manufacturer: Eruberu Co., Ltd

2-1-20 Ekimae Ibaraki Osaka Japan <https://eruberu.co.jp/>

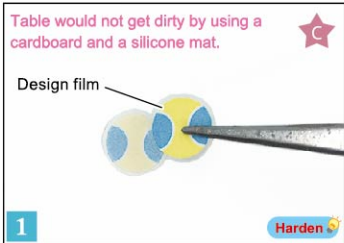
How to make

Enjoy creating your original charm, referring to the following image. When doing difficult procedure, please have guardians help you.

How to read "How to make".



Image



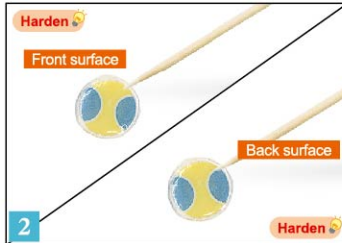
Apply a thin layer of resin to ball, plate and bone design films, and paste each design film together.

Tip!

If the resin piece is not flat, file it to make it even with a craft buffer before proceeding with the next step.



Apply a thin layer of resin to the design film, and put the design film onto it.



Apply some clear resin to the decorative part you create in step 1.



Remove the resin piece from the silicone mold. Apply a thin layer of resin to the design film, and put the design film onto it.



Cover the entire surface with the clear resin, and put design films onto it.



Create the decorative parts with other films the same as step 1 and 2.



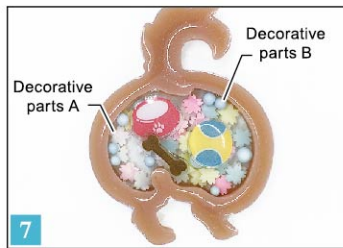
Cover the entire surface with the clear resin.



Coat the entire surface with the clear resin.



Apply the colored resin to the silicone mold until it is full.



Flip over the resin piece, and put decorative parts into it.



Attach the eyebolt cap and the key chain to the resin piece.

Basics

Images are just samples. Images may be different from the kit contents.  
Work away from direct sunlight and UV ray. When you don't use lamp, please turn it off.

How to color the resin



Put some clear resin on an OPP bag. Mix the clear resin and a small amount of coloring powder, grinding the powder.



Apply 2 or more colored resin into a silicone mold. Blend the boundary layer with a toothpick or an embossing heat tool.



Apply the several colored resins to the mold, and stir them with a toothpick.

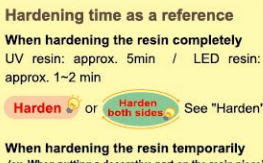
How to use a silicone mold



Remove air bubbles with a toothpick or an embossing heat tool.



Put the resin until the silicone mold is full. Harden the resin piece with a lamp. Flip over the silicone mold, harden it from the back surface.



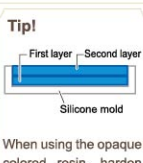
Harden the resin piece with a lamp. Flip over the silicone mold, harden it from the back surface.



Remove the resin piece from the silicone mold after hardening the resin.

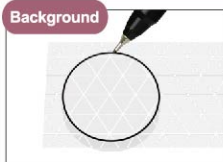


After removing from the mold, filing with craft file (flat) or cutting burs with scissors make the resin piece beautiful finish.



When using the opaque colored resin, harden the resin by color layer.

How to cut a design film



Draw a line according to the size of a silicone mold. Cut the slightly inner than the line, and make a minor adjustment.



Cut a film slightly bigger than the letter or the picture.



Coat the entire surface of a film with the clear resin.

How to put a design film or a decorative part



Apply a thin layer of resin to a place where you want to put a film or a decorative part. And put the part to the resin piece.



Cover the film with the resin.

How to attach a jewelry finding



Apply resin to a place where you want to put a jewelry finding.



Again, to increase the strength, apply some more resin to the attached part.



Apply some craft glue to the place of the resin piece where you want to put a jewelry finding, and put it on the resin piece.



Be careful of the direction of a jewelry finding. Attach the jewelry finding after checking the direction you want to use.

How to twist a pin (eye pin, head pin, ball head pin)

\* Make a pin straight before using.



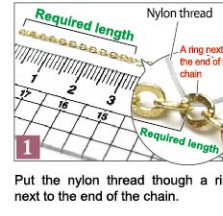
Thread a bead onto a pin. Make a 90 degree bend just above the bead with needle-nose pliers.



Make sure to close the pin without a gap between the pin and the bead.

How to cut Chain

\* When using a nylon thread as a mark



Put the nylon thread through a ring next to the end of the chain.

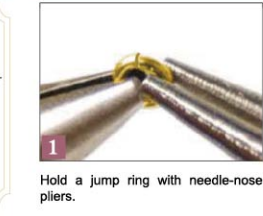


Cut the ring which the nylon thread passes through with nippers.

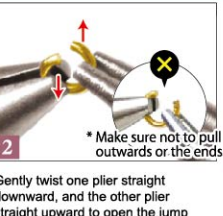


Remove the link.

How to open and close jump rings (the loop of the eye pin, head pin, ball head pin)



Hold a jump ring with needle-nose pliers.



Gently twist one plier straight downward, and the other plier straight upward to open the jump ring.



Connect it to whatever you're using, and grasp the jump ring the same way again with both pliers. Gently bend one plier up and the other plier down to close the jump ring again.



How to open the loop of a pin (eye pin, head pin, ball head pin)

<Attention>

Pay attention when dealing with metal parts

- As the color of plate coating may be affected if they were touched with sweat or stored in dirt, please wipe away the sweats or dirt with a soft cloth before you store them. We also recommend you to store the metal parts in a bag with zipper.
- Please never wipe the metal parts with jewelry polishing cloth containing abrasive material, that will affect the color of the plate coating.

Caution when wearing the Jewelry

- Jewelry iron parts may cause irritation to sensitive skin. If you have skin irritation, remove your jewelry and consult your doctor.
- To prevent incident, do not wear Jewelry while sleeping, playing sports, working, or taking care children.
- Jewelry iron parts may cause burns in extreme temperature conditions.

Suitable materials

Epoxy resin, UV resin, LED&UV resin, LED&UV Color Art resin, Super Stone Ceramic powder, Polymer clay, Silver clay etc. ※Do not use with items made of silicone.

Caution

- Wipe the dust and dirt from silicone mold before use. Do not use with food. Do not eat or swallow. When using with anything hardened by chemical reaction repeatedly, it may be difficult to remove your artwork from the mold. A silicone mold is perishable goods. It will degrade after many years and uses. When using with colored material, the color may stain on the mold. Wipe it off before reuse. Depending on the storage condition, durability may change. When removing from the mold, do not use a spatula, or do not excessively bend. This mold and your artwork may be damaged. Do not put this product on a printed paper, it may be stained with ink. This mold is an imported product. There may be some scratches.
- When producing a three-dimensional shape silicone mold, material to have heat-resistant, elasticity, and strength, and prevent from deterioration is put in the mold. Because of that, the color of the mold may be yellowish, and also the color will be much yellower with time. This is unavoidable phenomenon to maintain the characteristics, but it does not have an effect on creating resin artwork.

Storage

- Do not store in direct sunlight and avoid dirt. Keep out of reach of children and pets. Keep away from heat. The shape may change. Do not put one over another when storage.